





PRICE REDUCED! Nestled in a tranquil cul-de-sac set back from Shripney Road, Lidsey, this charming house offers a delightful blend of modern elegance and comfort.

With two spacious double bedrooms, one of which boasts a convenient en-suite bathroom, this property is perfect for both families and professionals seeking a serene living environment.

As you step inside, you will be greeted by a tastefully decorated interior that showcases modern chic décor, creating a warm and inviting atmosphere. The well-appointed reception room provides an ideal space for relaxation or entertaining guests, while the modern fitted kitchen and bathrooms ensure that all your daily needs are met with style and functionality.

The landscaped garden is a true highlight, featuring high polish Italian-style stone that adds a touch of sophistication to your outdoor space. This private garden not only offers a perfect spot for al fresco dining but also backs onto picturesque fields, providing a peaceful backdrop for your home.

This property is not just a house; it is a sanctuary that combines contemporary living with the beauty of nature. With its prime location and thoughtful design, it presents an excellent opportunity for those looking to settle in a quiet yet accessible area of Bognor Regis. Do not miss the chance to make this lovely home your own.



- Guide Price £285,000 - £295,000
- Tasteful & Chic Décor Throughout
- Master Bedroom With Modern En-Suite
- Second Double Bedroom
 - Stylish Bathroom
- Living Room With Dining Area
- Modern Fitted Kitchen With Appliances
- Landscaped garden With Italian Style Paving
- Tranquil Position Backing Onto Fields
- Beautifully Presented Home

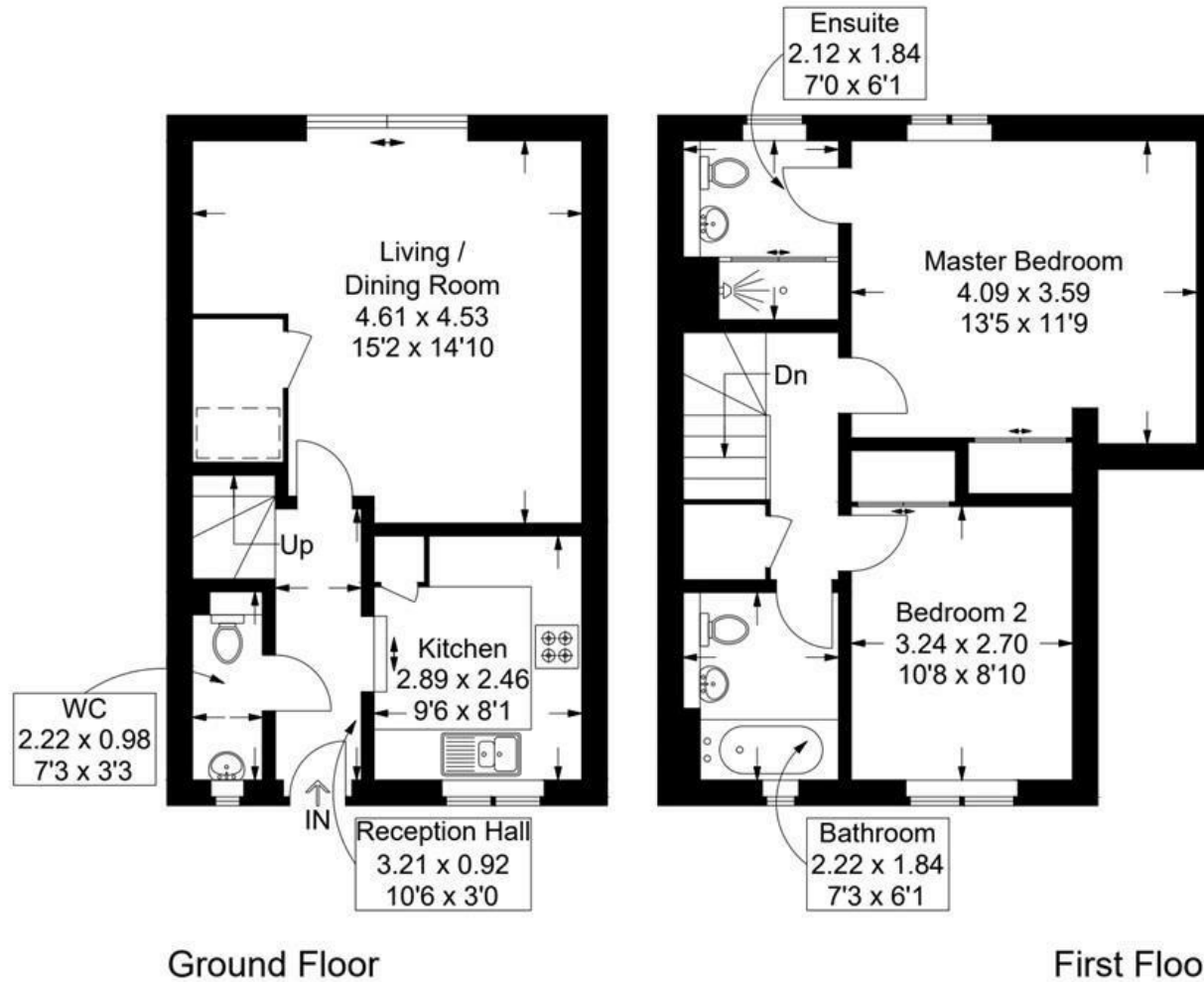
Orchard Place, Shripney Road, Bognor Regis

Approximate Gross Internal Area = 74.9 sq m / 806 sq ft

(Excluding Reduced Headroom / Eaves)

Reduced Headroom = 0.6 sq m / 6 sq ft

Total = 75.5 sq m / 812 sq ft



= Reduced headroom below 1.5m / 5'0

This plan is for layout guidance only. Not drawn to scale unless stated. Windows and door openings are approximate. Whilst every care is taken in the preparation of this plan, please check all dimensions, shapes and compass bearings before making any decisions reliant upon them.